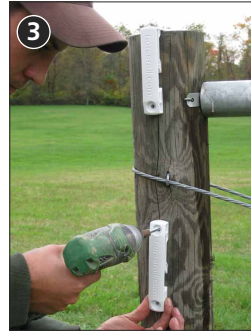
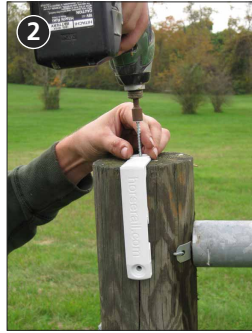


# HOTTOP® – LINE POST INSULATED BRACKET ATTACHMENT

## 1 Mark all posts. (see "How To Mark Posts" PDF)

- For the best looking fence, the rails should be placed equal distance apart.
- Find the center tangent of each post - this will reduce binding.



## 2 Attach Top Rail Insulator Bracket (see Diagram A)

- Top holes only
- Use wide shoulder, hex head drive screws for each bracket



## 3 Attach Line Post Insulator Bracket (see Diagram A)

- Top holes only
- Use wide shoulder, hex head drive screws for each bracket
- Bracket must be at right angle to rail - allowing for movement (see Diagram D)

## 4 Payout rail and insert into brackets

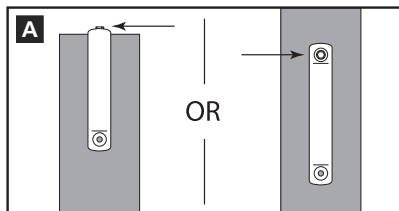
- To best protect the rail - Use either a "Payout Box" or an oversized spinning jenny

## 5 Lift and slide rail in place (see Diagram B) from bottom of insulator up into the top slot.

## 6 Cup rail so it snaps into the bottom slot of insulator bracket.

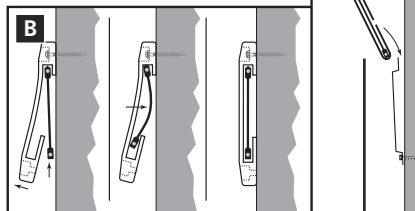
## 7 Finish attaching all insulator brackets to line posts

- Bottom hole for Insulator Brackets and Top Metal Insulated Bracket
- Top hole for Line Post Metal Insulated Brackets
- See Diagrams C and D



### CAUTION:

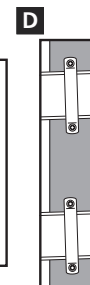
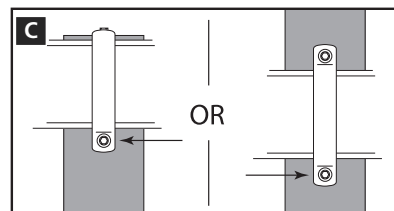
Place bracket on tangent of post and rail. If the bracket is off center it will pinch or bind the rail when tensioning.



### OPTION

#### Line Post Metal Insulated Brackets

Use bottom hole to attach bracket, slide rail and insulator from the top.



## Horserail® Products

- Top Rail Insulator Bracket
- Line Post Insulator Bracket
  - Colors: White, Black and Brown
  - Size: 4" (10cm)

## Other Tools Needed

- Payout Box or Oversized Spinning Jenny
- Impact Wrench
- Wide Shoulder, Hex Head Drive Screws

## Other Related PDF Info Sheets

- How to Mark Posts
- Rail Payout Box

For More Details,  
Tips & Techniques  
on Building Fences,  
Please visit our website:  
[www.horserail.com](http://www.horserail.com)



**SAFETY FIRST: USE SAFETY EYE GLASSES AND GLOVES.**