

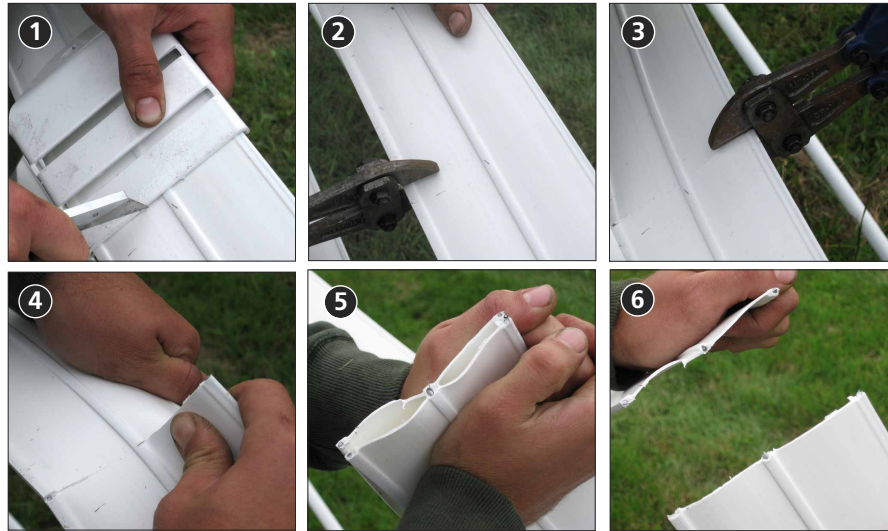
# HOW TO CUT RAIL

Procedures are the same for Horserail® and Hottop®

The goal is to obtain a clean, square cut!

- 1 Using a square or the side of a Buckle, score a line across the full width of the rail.
- 2 Using bolt cutters, snip one outer wire at the end of the score line.
- 3 Then snip the other outer wire at the other end of the score line.
- 4 Tear the rail from both ends toward the center wire.  
**Note 1:** If the rail has only 2 wires - you will be able to tear the entire width of the rail.  
**Note 2:** If the rail has 4 wires - you will need to cut all 4 wires with bolt cutters.
- 5 Bend the rail in half, then straighten the rail, then bend the rail the other direction.
- 6 Continue until rail snaps in two.

**OPTION:** Score and cut with handheld grinder.



## Horserail® Products

- Horserail® or Hottop®
  - Colors: White, Black and Brown
  - Sizes: 4", 5" and 6" (10cm, 13cm and 15cm)
  - From 2 wire up to 4 wire configurations

## Other Tools Needed

- Square or Horserail® Buckle
- Utility Knife
- Bolt Cutters or Grinder



**TIP:** To find the proper length when attaching a rail to an end post:

- First place a Buckle on top of the rail.
- Pull the rail (hand tight).
- Hold the two items up to the post marking where the desired length would be.
- Mark the rail and follow the steps on how to cut it.

*For More Details,  
Tips & Techniques  
on Building Fences,  
Please visit our website:  
[www.horserail.com](http://www.horserail.com)*



**SAFETY FIRST: USE SAFETY EYE GLASSES AND GLOVES.**