

TENSIONING SPOOLER

Used for Tensioning Both Hottop® and Horserail®

Installing the Convenient Two Piece Spooler

1 Place the Two-Piece Spooler on the rail by first holding the Spooler up to the rail and then sliding the removable section into the appropriate slot. Keep 12" (30cm) to 18" (45cm) from line post.



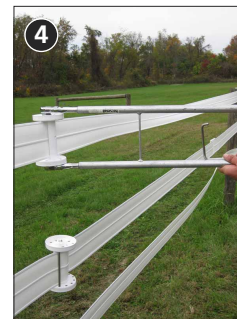
2 Square the spooler (with a speed square) to the rail before tensioning.



– Use one Spooler for every 660' (200m) of Rail and/or when 90° of elevation and directional change occur.



– Corners, small dips and rises create friction so use one Spooler for every accumulated 90°.



– Make sure rail is hand tight before final tensioning with spooler.

– Must have sufficient slack in rail for one full rotation before becoming taut.



3 To make installation and tightening easier and safer, use the Extended Handle Ratchets. Place a ratchet on each Spooler hub.



4 Slide on extended handles and remove the safety pin from the rubber strap.

5 Tension the rail by first ratcheting the Extended Handles (use the safety pin to hold the tension while ratcheting back) then remove safety pin, repeat ratcheting until taut.

6 Two locking pins MUST be placed opposite each other in holes closest to the tensioned rail.

7 For best presentation - install Spoolers to line up vertically.

2 Person Installation Option

Use two long handled 1/2" (12mm) drive ratchets (one on each end of the hub).

Always Follow These Steps:

A) Pull both long handles towards you.

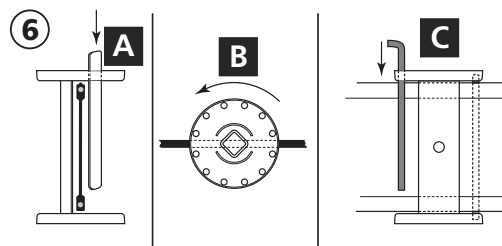
B) Hold one (A) steady while ratcheting back the other (B)

C) Now hold (B) steady and ratchet back (A) and finally

D) Pull both towards you again. Repeat as needed.

– Don't over-tension the rail or tension a spooler on a taut fence.

– When tensioning, use two people: one to ratchet, one to assist with the alignment and to lock pins in place.



Install Spooler and tension the fence

For aesthetics - place Spooler 12" (30cm) (min.) from line post

A Place Spooler on rail and slide "removable" hub piece into place

B Allow for one full rotation before becoming taut

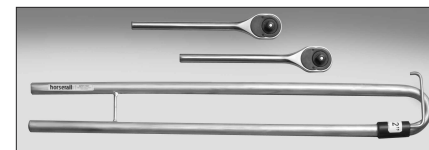
C Place locking pins into pre-drilled holes, opposite each other, to stop the Spooler from unwinding

Horserail® Product

- **Tensioning Spooler**
- Colors: White, Black and Brown
- Sizes: 4", 5" and 6" (10cm, 13cm and 15cm)

Other Tools Needed

- **Speed Square**
- **Extended Handle Ratchets**
- **Long Handle Ratchets**



Extended Handle Ratchets



Long Handle Ratchets

For More Details,
Tips & Techniques
on Building Fences,
Please visit our website:
www.horserail.com

